



## ANTARCTICA IN DEPTH

13 Days  Buenos Aires > Buenos Aires | Scenic Eclipse | December 10, 2025

### Great Escapes Exclusive Group Savings offer for a lifetime adventure to Antarctica

- Your 13-day polar expedition to Antarctica is filled with awe-inspiring glacial landscapes, unbridled adventure and wildlife that will capture your heart, from humpback whales to colonies of waddling penguins.
- The constantly changing weather and scenery provide opportunities for professional and amateur photographers alike.
- Enjoy Zodiac excursions and go kayaking in Antarctica under the guidance of the experienced Discovery Team.
- Dive deep into the pristine waters in our custom-designed submersible Scenic Neptune<sup>^</sup>, or
- take to the skies in our state-of-the-art helicopters<sup>^</sup>.
- Throughout your voyage, combine your discovery of this extraordinary part of the world with an indulgent ultra-luxury experience on board your 6-star Discovery Yacht.
- From up to 10 dining experiences and up to nine bars and lounges to the expansive Senses Spa and your spacious verandah suite, let every moment of this once-in-a-lifetime journey captivate the spirited explorer within.

Cruise pricing starting from **\$10,483** per person



### All-inclusive highlights

- An intimate Discovery Yacht experience for only up to 200 guests
- Spacious all-verandah ultra-luxury suites
- Butler service for every guest and an almost 1:1 crew-to-guest ratio
- Up to 10 culinary experiences, from casual to fine dining
- The finest selection of included\* premium branded beverages, all day, every day
- Indulgent 5,920 sq. ft. (550 sq. m.) Senses Spa, gym, Pilates studio and Vitality Pools

- Daily entertainment in the state-of-the-art theater and Scenic Lounge
- Lounge Included program of Zodiac and guided paddling Discovery Excursions
- All tipping on board and onshore and complimentary Wi-Fi<sup>^</sup>
- Internal flights, return airport transfers upon arrival and departure in destination

\*All drinks on board are included except for a very small number of rare, fine and vintage wines, champagnes and spirits. <sup>^</sup>Not available in all locations.

Lisa@GreatEscapesTrav.com

435-628-1500

Great  
ESCAPES



# ANTARCTICA IN DEPTH

13 Days  **Buenos Aires** > Buenos Aires | Scenic Eclipse | December 10, 2025

Day 1

## Buenos Aires, Argentina

Welcome to Buenos Aires, where you'll have an overnight hotel stay. Perhaps plan to spend some time in the city, nicknamed the 'Paris of South America.' Resplendent with Belle Epoque buildings, sidewalk cafes, and green spaces, there's the fiery passion of Latin America – a collective love for football, flame-cooked meats (asado), and the tango.

Some highlights are La Boca, a colorful, creative mecca with a must-do art walk, and San Telmo, a former aristocratic neighborhood abandoned during a 19th-century epidemic. Mansions were turned into conventillos (shared housing), boutique hotels, antique shops, and tango clubs, exuding a captivating bohemian vibe.

Day 2

## Buenos Aires > Ushuaia

Fly from Buenos Aires to Ushuaia, the main island of Tierra del Fuego and the southernmost city in the world.

The captain and crew will warmly greet you as you board your ultra-luxury Discovery Yacht, Scenic Eclipse.

Toast the start of your once-in-a-lifetime expedition as you depart South America and cruise through the calm and scenic Beagle Channel, named so for the ship that carried Charles Darwin on his five-year discovery journey. Admire the dramatic views of the Andean mountains from the comfort of your private verandah or the Observation Deck with its commanding view of the bow.

**Meals: B.D.**

Day 3

## At sea

Wake up on your time as we cruise across the Drake Passage, the infamous waterway connecting South America to Antarctica. Ask your butler for breakfast delivered to your spacious suite or meet fellow guests in the Yacht Club.

Today, join an introductory presentation about your polar expedition by the Polar Discovery Team in the state-of-the-art theater. Feel the excitement building as they explain how your Zodiac and other Discovery Excursions will work in the coming days.



 Cruising  Cruise start/finish  Overnight

The theater is where you can watch talks, lectures, movies, and documentaries during the day. Enjoy world-class productions from musical theater and cabaret to pop music, dance, and fun interactive game shows at night.

**Meals: B.L.D.**

Day 4

## At sea

Today, you will enter Antarctic waters, an unpredictable but stunningly beautiful environment that constantly surprises you. Put on your complimentary polar parka and head to the Observation Deck to spot icebergs for the first time – it's a feeling that will stay with you forever. Watch out for whale blows in the distance. Your expert polar Discovery team will be on hand to provide and answer any insightful information. Comprised of up to 20 members, this team of geologists, historians, ornithologists, marine biologists, and glaciologists is at the heart of your Antarctic Voyage.

**Meals: B.L.D.**

Day 5

## Antarctica

Slide open the floor-to-ceiling doors of your verandah suite to see icebergs sculpted by nature and glacial mountains rising thousands of feet from the ocean.

Antarctica is a birdwatcher's paradise, with more than 40 different species, so keep your eyes peeled for wandering albatrosses, which have the largest wingspan of any flying bird, shearwaters, giant petrels, and more.

Due to the extraordinary nature of the region, excursions throughout your Expedition Voyage depend on ice and weather conditions. Your experienced Captain and specialist Discovery Team, who have made countless journeys to Antarctica, will use their expertise to design your voyage day by day, making the most of 18–20 hours of daylight.

**Discovery:** Daily experiences may include cruising on Zodiacs, stepping ashore to view vast penguin rookeries or historic huts, and kayaking or paddle boarding around icebergs. You will have countless "pinch me" moments wherever your voyage takes you.

**Meals: B.L.D.**

Day 6

## Antarctica

Portal Point^^ – a former British refuge hut – may be a potential landing site during your voyage.

Or you may visit Deception Island^^ as part of your itinerary. Nestled in the South Shetland Islands archipelago, it is one of the only places in the world where ships can sail directly into the center of a submerged caldera of an active volcano.



# ANTARCTICA IN DEPTH

13 Days  Buenos Aires > Buenos Aires | Scenic Eclipse | December 10, 2025



With her world-class design and state-of-the-art technology, Scenic Eclipse can sail through a rocky gap into the horseshoe-shaped harbor. The island also has small scientific outposts and hundreds of thousands of chinstrap penguins.

Tonight could be the night you enjoy Sushi^ @ Koko's with your new friends. Stay up late in the bar or retire to the library for blissful solitude before bed.

**Meals: B.L.D.**

Day 7

## Antarctica

Various species of penguins can be found in the Antarctic and the sub-Antarctic region, with around 12 million penguins living on the Peninsula, including Adélie, Chinstrap, Gentoo, and the very rare Emperor penguins. Guided by the expert Polar Discovery Team, you'll witness colonies up close, hear their mighty calls, and watch as they clumsily waddle along and interact with each other.

Whales are another majestic creature you may encounter, whether a minke, a humpback, or an Orca. Watch them from the comfort of your ultra-luxury Discovery Yacht, in a Zodiac with an experienced Polar Discovery Team member, or from their level in a kayak or stand-up paddleboard – a breathtaking experience.

**Discovery:** When enjoying daily Scenic Discovery excursions, ask for your expert Discovery Leader for photography tips and guidance on how to spot the wildlife around you. They will help you immortalize these incredible moments while cruising on the Zodiacs, kayaking, and stand-up paddleboarding around impressive ice formations.

**Meals: B.L.D.**

Day 8

## Antarctica

Lemaire Channel^^, renowned for its picturesque views and often referred to as 'Kodak Alley,' could be our next exciting destination. If, during your voyage, the Scenic Eclipse weaves through this channel, make sure you set your alarm and embrace the cool air from the Observation Terrace. Pass through the 6.8-mile (11-kilometer) long channel, just under 2,300 feet (700 meters) wide at its narrowest point, and be amazed at the dramatic rocky mountains and glowing blue icebergs so close to the ship.

In between Scenic Discovery experiences, enjoy a specialty tea or coffee in the Observation Lounge and watch the world float by through Swarovski telescopes.

**Meals: B.L.D.**

Day 9

## Antarctica

In the distance on a clear day, you can see Mount Francis^^ standing tall as Anvers Island's highest peak, showcasing the rugged beauty of Antarctica. Every day is unique, and you might get the chance to hike or spend time on the pebbled beach, enjoying the view surrounded by curious penguins.

Back on board, explore some of Scenic Eclipse's indulgent spaces, from the welcoming Observation Lounge to the expansive Senses Spa#. Soothe your muscles in the sauna or heated therapy lounge, or join a yoga or Pilates class. Choose one of up to 10 world-class dining experiences on board tonight.

**Meals: B.L.D.**

Day 10

## Antarctica

Be sure to pack your swimming suit because you could be going for a swim today. For many, the polar plunge is a once-in-a-lifetime opportunity and a rite of passage on an expedition to Antarctica.

# ANTARCTICA IN DEPTH

13 Days  Buenos Aires > Buenos Aires | Scenic Eclipse | December 10, 2025



Once throughout your voyage, the Scenic Eclipse will stop, and the team will set up the marina ready for the brave people who want to jump into the freezing Antarctic waters.

Excitement will spread through the Discovery Yacht, and you will start hearing the contagious nervous laughter. As you stand on the edge, ready to jump, you will feel the adrenaline rush while you second-guess whether this is a good idea. When you jump, the moment before you hit the water will feel like it goes forever, but soon, an invigorating, exciting, and surprisingly refreshing sensation will take over.

If you choose to skip the polar plunge, make sure you find a good viewing location as you feel the chills of everyone coming out of the water. Join them for a cup of hot chocolate or toast with a glass of whiskey.

**Meals: B.L.D.**

Day 11

At sea

Cruising the Drake Passage back to the tip of South America, there is plenty of time to indulge in the ultra-luxury of your Discovery Yacht and reflect on the magic moments you've experienced in the Southern Ocean.

Freshly squeezed juice, steaming barista-made coffee, or tea delivered to your door by the butler will help start your day. Head to the gym for an invigorating workout or the studio for a Pilates class, some guided stretching, or aerial yoga.

In the evening, settle in at the spacious Scenic Lounge Bar to enjoy your beverage, whether aged whiskey or a glass of wine.

With Scenic's signature all-inclusive ultra-luxury philosophy, indulge in top-shelf spirits, over 130 whiskeys, a premium wine list, and French champagne.

**Meals: B.L.D.**

Day 12

At sea > Ushuaia

Have you visited the bridge yet? Thanks to the Captain's open bridge policy, guests are welcome to learn more about the technical abilities of The World's First Discovery Yacht at any time and see it during the entire operation. The bridge is also one of the best viewing areas on the ship.

Book a treatment# at the tranquil Senses Spa before your Discovery expedition ends. Perhaps an ESPA facial or massage# or an alternative therapy, including Ayurvedic massage or Japanese shiatsu. Afterward, hold on to that feeling of calm for a while longer in the Zen-like space of the Vitality Lounge.

**Meals: B.L.D.**

Day 13

Ushuaia, Argentina > Buenos Aires

Your voyage ends this morning as you farewell the crew and fellow guests. After breakfast, disembark to fly to Buenos Aires, taking away memories of a truly unforgettable experience.

**Meals: B.**

Please book your flight to depart out of Buenos Aires after 8:00 PM.

*The itinerary is a guide only and may be amended for operational reasons. As such, Scenic cannot guarantee that the voyage will operate unaltered from the itinerary stated above. Please refer to our terms and conditions for further information.*

\*Reservation required

\*\*Subject to weather and operational conditions.

Sightings cannot be guaranteed.

# Spa treatments at extra cost.

\*All drinks on board, including those stocked in your minibar, are included, except for a few rare, fine, and vintage wines, Champagnes, and spirits.

Note: Flights on board our two helicopters and submersible experiences are at additional cost and subject to regulatory approval, availability, weight restrictions, medical approval, weather, ice, and tidal conditions.

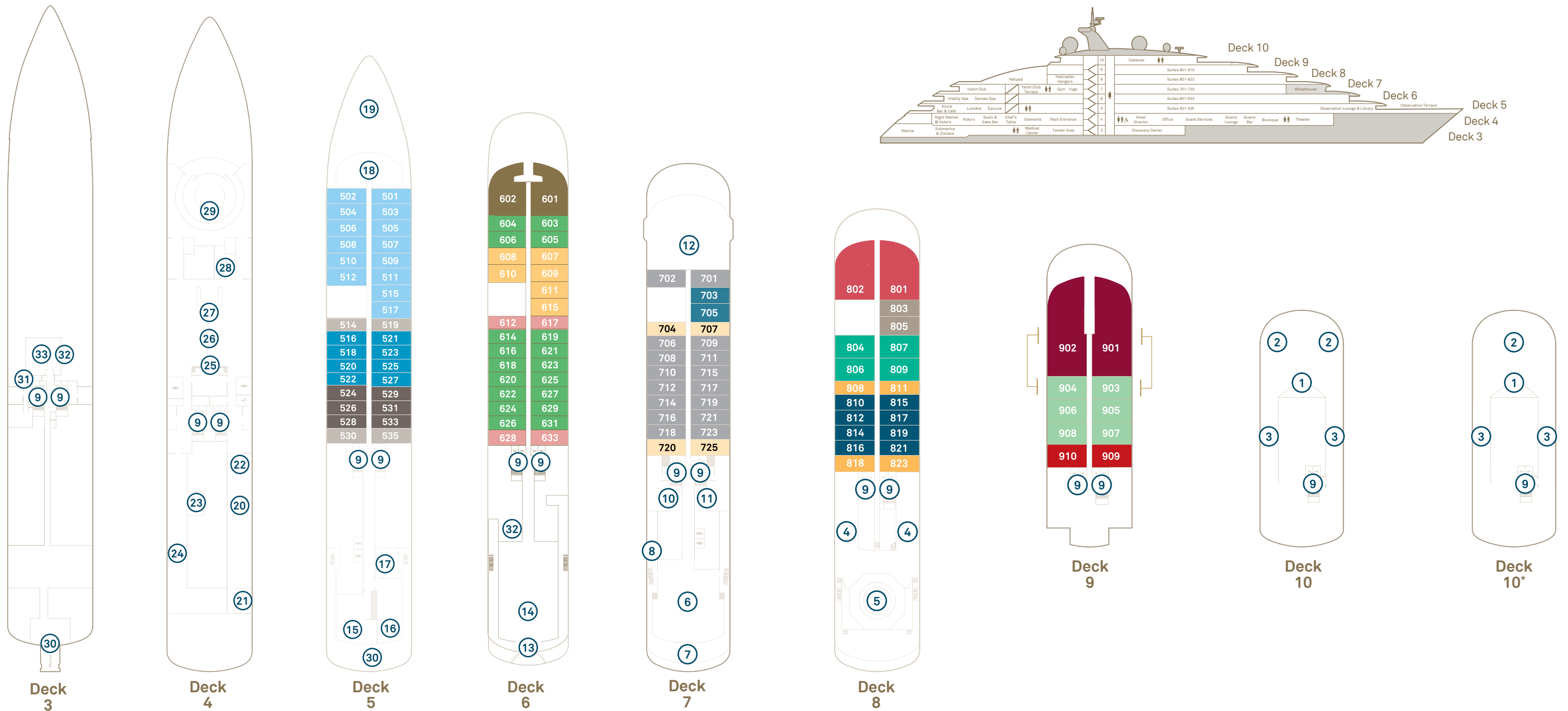
**Meals: Breakfast (B).**

**Lunch (L). Dinner (D).**



**Terms and Conditions:** A non-refundable initial deposit of 20% per person is required at the time of booking, with full payment required 130 days before departure. This offer is not combinable with any other offer. Offer available to Great Escapes clients only. Offer may be extended, canceled, or withdrawn without notice. Pricing is correct at the time of print. Visit [scenicusa.com/terms-and-conditions](https://scenicusa.com/terms-and-conditions) for complete terms and conditions. SC-240177-4 -





**Deck Plan**

- ① Sky Deck Bar
- ② Sky Deck Vitality Pool\*
- ③ Cabanas
- ④ Helicopter hangars
- ⑤ Helipad
- ⑥ Yacht Club
- ⑦ Yacht Club outdoor dining
- ⑧ Hanging Chairs
- ⑨ Elevator
- ⑩ Yoga & Pilates room
- ⑪ Gym & fitness area
- ⑫ Wheelhouse
- ⑬ Spa Vitality Pool
- ⑭ Senses Spa
- ⑮ Lumière
- ⑯ Azure Bar & Café
- ⑰ Scenic Épicure
- ⑱ Observation Lounge & Library
- ⑲ Observation Terrace
- ⑳ Koko's
- ㉑ Night Market @ Koko's
- ㉒ Sushi @ Koko's
- ㉓ Chef's Table@ Elements
- ㉔ Elements
- ㉕ Guest Services
- ㉖ Scenic Lounge
- ㉗ Scenic Bar
- ㉘ Boutique
- ㉙ Theater
- ㉚ Marina entrances
- ㉛ Medical Center
- ㉜ Self-service guest laundry†
- ㉝ Discovery Center

**Scenic Eclipse / Scenic Eclipse II**

Built 2018 & 2023 | Passengers 200/228 | Suites 114 | Crew 192/176 | Length 551 feet | Gross Tonnage 17,085 | Speed 17 knots

**Suite Categories**

CAT	Deck 5	Qty	Size	CAT	Deck 6	Qty	Size
DD	Grand Deluxe Verandah Suite	14	409-430 sq. ft. / 38-40 sq. m.	GP	Grand Panorama Suite	2	1,130 sq. ft. / 105 sq. m.
DB	Deluxe Verandah Suite	8	344-366 sq. ft. / 32-34 sq. m.	CD	Grand Deluxe Verandah Suite	6	409-430 sq. ft. / 38-40 sq. m.
DA	Deluxe Verandah Suite	6	344-366 sq. ft. / 32-34 sq. m.	CA	Deluxe Verandah Suite	18	344-366 sq. ft. / 32-34 sq. m.
D	Verandah Suite	4	344 sq. ft. / 32 sq. m.	C	Verandah Suite	4	344 sq. ft. / 32 sq. m.
Deck 7				Deck 8			
CAT	Qty	Size	CAT	Qty	Size		
BD	Grand Deluxe Verandah Suite	2	409-430 sq. ft. / 38-40 sq. m.	P	Panorama Suite	2	1,184 sq. ft. / 110 sq. m.
BA	Deluxe Verandah Suite	16	344-366 sq. ft. / 32-34 sq. m.	S	Spa Suite	4	495-538 sq. ft. / 46-50 sq. m.
B	Verandah Suite	4	344 sq. ft. / 32 sq. m.	AD	Grand Deluxe Verandah Suite	2	409-430 sq. ft. / 38-40 sq. m.
				AA	Deluxe Verandah Suite	8	344-366 sq. ft. / 32-34 sq. m.
				A	Verandah Suite	4	344 sq. ft. / 32 sq. m.

CAT	Deck 9	Qty	Size
OT	Two-bedroom Penthouse		2,637 sq. ft. / 245 sq. m.
OP	Owner's Penthouse	2	2,099 sq. ft. / 195 sq. m.
SB	Spa Suite	6	495-538 sq. ft. / 46-50 sq. m.
SA	Spa Suite	2	495-538 sq. ft. / 46-50 sq. m.

^ Suites 901 & 903 and 902 & 904 connect as a Two-bedroom Penthouse Suite.  
 † Laundry is located on Deck 6 on Scenic Eclipse II.  
 \* Available on Scenic Eclipse II.

The deck plan and suite layout images are an indication only and may vary between ships. Suite measurements are approximate, and those in same category may vary in size.



# Where ultra-luxury meets discovery

There's something truly extraordinary about a Discovery Yacht that can adapt to its surroundings and environment. Combining state-of-the-art technology with luxurious suites and world-class dining and wellness facilities, Scenic Eclipse will take your travel experience to new heights.



Two Helicopters<sup>^</sup>

Up to 10 Dining Experiences

GPS Dynamic Positioning System

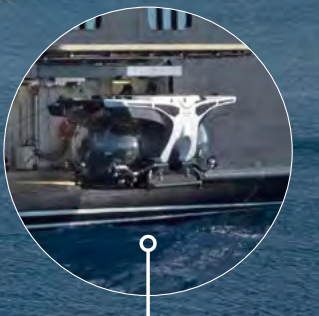
Sky Bar

Advanced Heating & Ventilation

Observation Lounge

Observation Deck

Senses Spa<sup>\*</sup>



Submersible<sup>^</sup>

Marina

Kayaks & Stand-up Paddleboards

Oversized Stabilizers

Ultra-luxury Suites

Up to Nine Bars & Lounges

State-of-the-Art Theater

Zodiacs

<sup>^</sup>Flights on board our two helicopters, helicopter experiences and submersible at additional cost, subject to regulatory approval, availability, weight restrictions, medical approval and weather and tidal conditions. <sup>\*</sup>Spa treatments at additional cost.



# Welcome to a world of unrivaled ultra-luxury and discovery



Scenic Eclipse, Orkney Islands, Scotland

Custom-designed with a wealth of world-class features for unrivaled exploration, Scenic Eclipse sets the benchmark in ultra-luxury cruising.

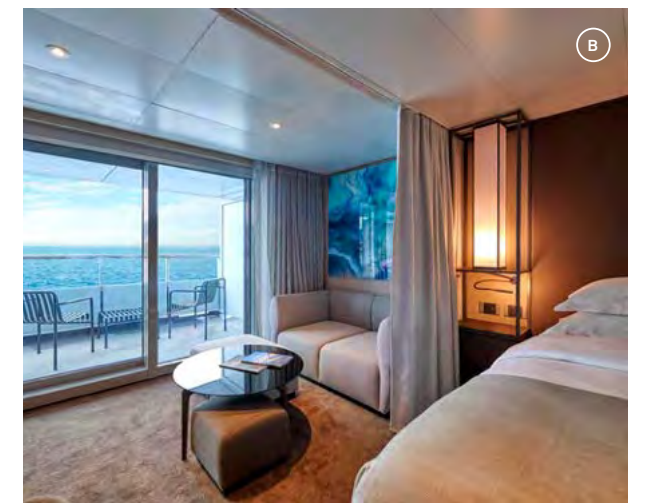
## The World's First Discovery Yachts

Catering for only up to 228 guests (200 in Antarctica), Scenic Eclipse is in a class of its own. Combining the sleek design of a super yacht with industry-leading technology, the Discovery Yachts are equipped with state-of-the-art technology. From customized stabilizers for comfort to a GPS Dynamic Positioning System to maintain the ship's location without dropping anchor onto sensitive seabeds.



## The Most Luxurious Suites at Sea

Featuring the finest ultra-luxury amenities, each of Scenic Eclipse's spacious 114 suites have been carefully crafted to be your indulgent haven. Relax with a lazy morning in your signature king-size bed, unwind with a book in the lounge or open your 'window to the world' and soak in the breathtaking views that surround you from your private verandah or terrace. Enjoy personalized butler service in every suite, from the most luxurious lead-in suites at sea to our Owner's Penthouse Suite.



## A Culinary Journey

Whether it's modern French cuisine, authentic Asian fusion or a house-made gelato, indulge in extraordinary creations inspired by the flavors of the world. Enjoy up to 10 world-class dining experiences created by a culinary team of over 38 chefs from over 15 countries, using locally sourced produce. Scenic Eclipse also includes a premium selection of beverages at all of our indulgent bars and lounges, including over 130 whiskeys at the Scenic Lounge Bar.



**A** Vitality Pool, Scenic Eclipse II **B** Verandah Suite, Scenic Eclipse II **C** Koko's Asian Fusion, Scenic Eclipse I



# All-Inclusive, in a Class of its Own

When you travel with Scenic you can be confident that every detail has been taken care of, to make your journey truly carefree.

## All Suites

- Spacious all-verandah suites
- Personalized butler service
- Signature Nth Degree service with a close to 1:1 crew-to-guest ratio

## Specialty Restaurants & Bars

- Up to 10 culinary experiences, from casual to fine dining
- Unlimited beverages, with the finest selection of included premium branded beverages, available all day\*
- A choice of over 130 whiskeys\*
- In-suite mini-bar replenished everyday

## Unrivaled Wellness

- Indulgent 5920 sq. ft. (550 sq. m.) Senses Spa<sup>#</sup>, gym, yoga and Pilates studio and Vitality pools

## Discovery Team & Expert Guides

- Discovery Team of up to 20 experts on Expedition Voyages and up to 15 on Discovery Voyages
- Expert local guides on Cruise Voyages

## Entertainment

- Daily entertainment and lecture programs in the state-of-the-art theater and Scenic Lounge

## Included Excursions

- Discovery program with Zodiac, kayak and stand-up paddleboard on selected Expedition and Discovery Voyages<sup>~</sup>
- Exclusive Scenic Enrich events and Scenic Freechoice experiences to personalize your journey on Discovery and Cruise Voyages
- E-bike fleet for onshore exploration on Cruise Voyages

## Your Peace of Mind

- All tipping and gratuities (on board and onshore)
- Complimentary Wi-Fi<sup>^</sup>
- Internal flights included
- Return airport transfers upon arrival and departure at destination
- Complimentary parka and water bottle, plus use of special polar boots on Expedition Voyages
- Pre- and post-voyage support to organise journey extensions, cruise combinations, packing tips and other information



Owner's Penthouse Suite, Scenic Eclipse I

\*All drinks on board are included except for a very small number of rare, fine and vintage wines, Champagne and spirits. ^Limited in remote regions. #Spa treatments at additional cost. ~Kayak and stand-up paddleboard not available in all locations.